

R-501 R-502



Flow Control Valve

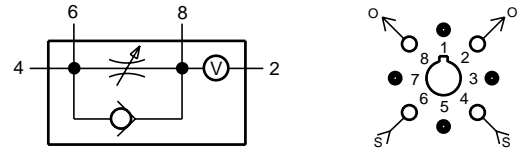
Features:

- Multiple porting speeds piping
- Knurled knob for fast, accurate adjustments - no tools needed
- Fine adjustment for pneumatic timing

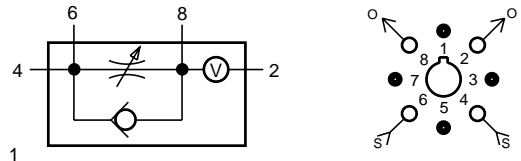
Performance:

Flow (SCFM @ 100 psig).....0 to 1
 Pilot pressure (psig) minimum..... -
 Temperature.....32° to 180° F
 Working pressure.....0 to 150

R-501 Delay In Flow Control



R-502 Delay Out Flow Control



Description:

R-501 is an adjustable flow control designed to meter "IN" to an integral volume chamber to delay pressure build-up in one direction. Dual ports are provided to add extra volume or for multiple input-output connections.

R-502 is an adjustable flow control designed to meter "OUT" from an integral volume chamber to delay pressure decay in one direction.

R-602 R-603



Dual Shuttle Valves

Features:

R-602

- Bubble tight operation
- Two independent units in one module
- Saves space

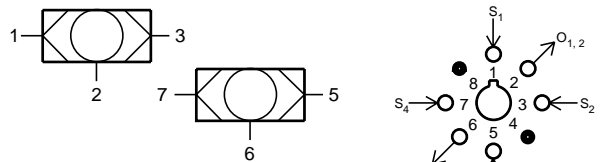
R-603

- Complete three input subcircuit in one module
- Auxiliary outputs save fittings and time

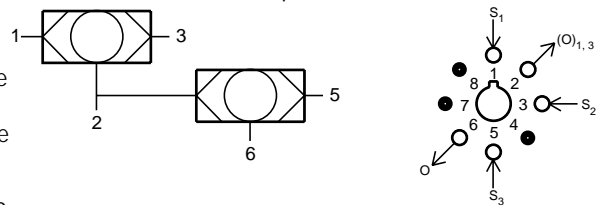
Performance:

Flow (SCFM @ 100 psig).....10
 Pilot pressure (psig) minimum..... -
 Temperature.....32° to 180° F
 Working pressure.....5 to 150

R-602 Dual Shuttle Valve



R-603 3-Input "OR"



Description:

R-602 is a dual element combination consisting of two completely independent shuttle valves in a single body. R-603 is a dual element combination consisting of two shuttle valves which are interconnected into a subcircuit. It provides a 3-input "or" with port 2 available as an auxiliary. If not used, port 2 should be plugged.